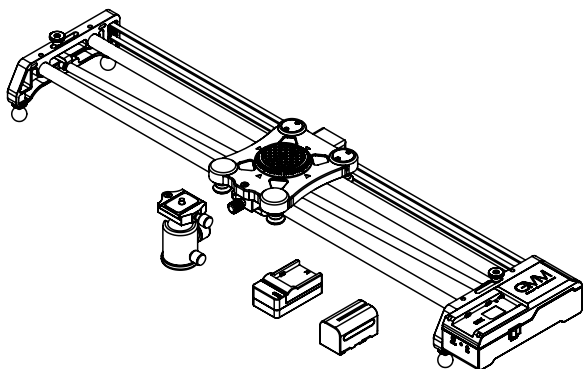


GVM

GREAT VIDEO MAKER



GVM-Slider-80 GVM-Slider-120

MOTORIZED SLIDER

Web: www.gvmled.com

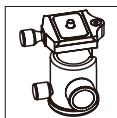
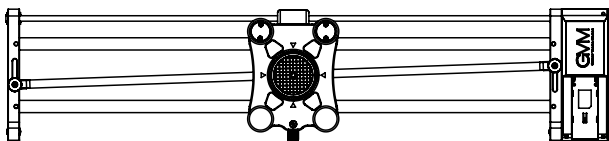
B&H Email: bh@gvmled.com

GVM Email: support@gvmled.com

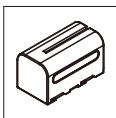
Amazon Email: amazonsupport@gvmled.com

Warehouse Add: 4301 N Delaware ave, unit D. PHILADELPHIA, PA19137, USA

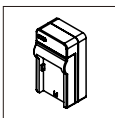
1 Isi dalam Paket



Ball head*1



Lithium battery*1



Battery charger*1



Shutter cable*6



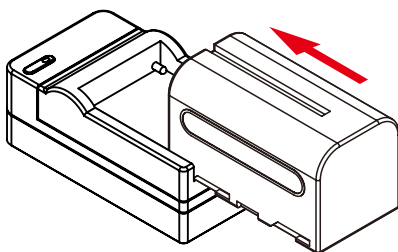
Shutter extension cable*1



Slider bag*1

2 Cara Pemasangan Kamera ke Slider

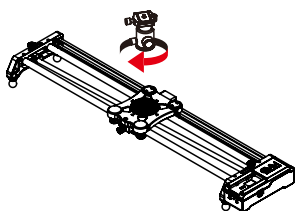
1. Please charge the battery before using the slider.



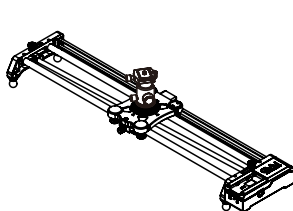
2. Please install and use the slider as shown in the pictures.

1. Ball head and slider installation steps. (As shown below)

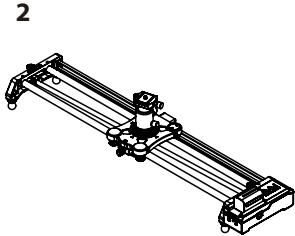
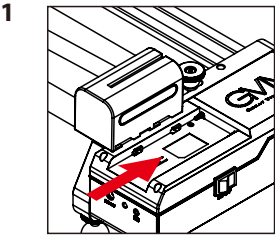
1



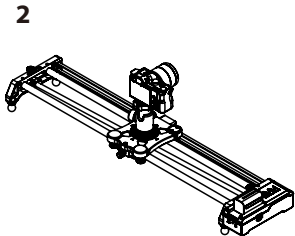
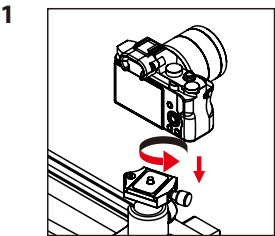
2



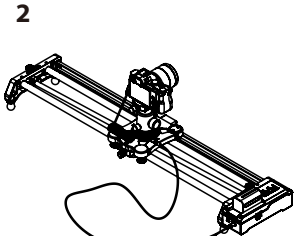
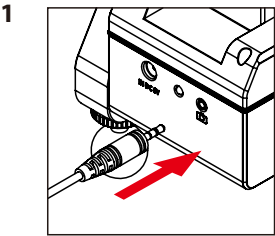
2. Battery installation steps. (As shown below)



3. Camera/camcorder installation steps. (As shown below)

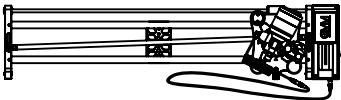
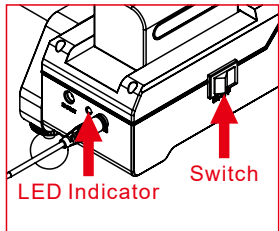


4. Shutter cable connection steps. (As shown below)



3 Cara Penggunaan

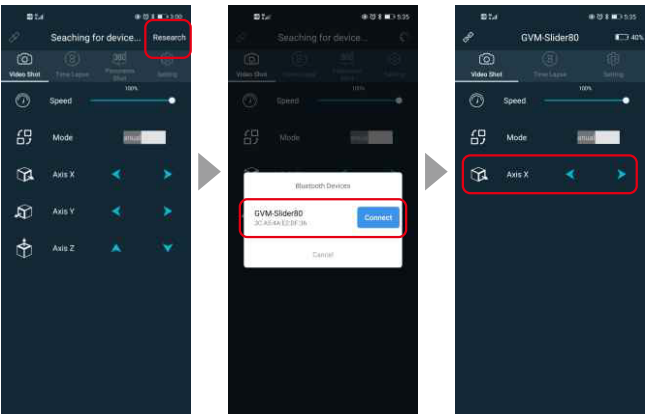
1. Turn on power switch of slider, when power indicator flashes, the ball head of slider automatically resets to move to right. (When not connected, the indicator is red, after Bluetooth connection, the indicator is green.)



2. Scan code to download GVM Slider APP and install it on your phone → Open APP within 5 seconds, the "Bluetooth Device" dialog box will pop up automatically → Click the Bluetooth name "GVM-Slider80/120" and "Connect" within 10 seconds to enter Single Slider Control APP Interface. At this time, the APP Interface only display X axis, without Y and Z axis.



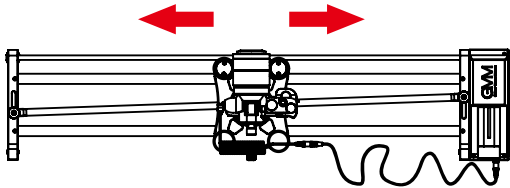
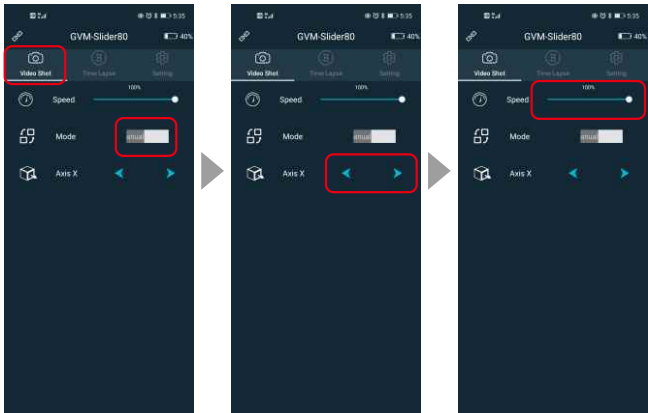
3. If no "Bluetooth Device" dialog box pops up, you can click "Research" again → Click "Connect" → within about 10 seconds to enter APP Interface. At this time, the APP Interface only display X axis, without Y and Z axis.



4. Manual mode :

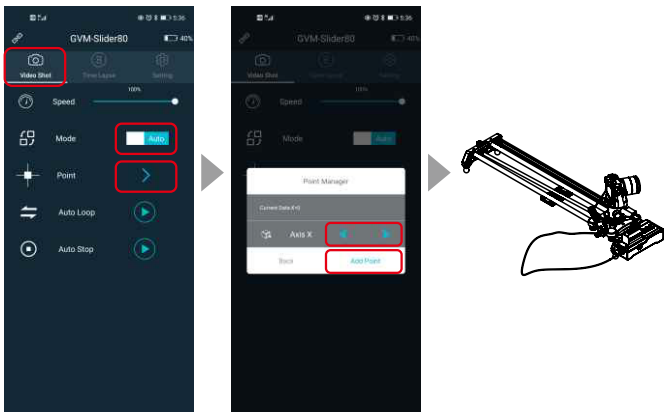
Video shooting → Manual mode (Gray) → Press left or right arrow
→ Slider starts slowly at the beginning and stops slowly at the end.

Tap the speed bar to slide left and right to change the speed (1%~100%).

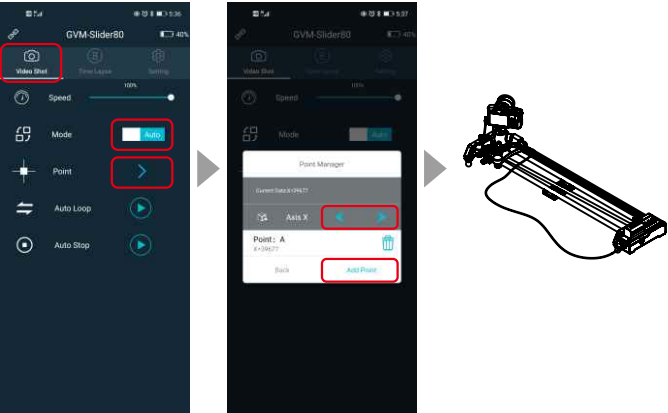


5. Automatic mode : Set key points

① Video shooting → Automatic mode → Set key point → Add key point A (moving slider operation to any desired starting point) → Confirm to save



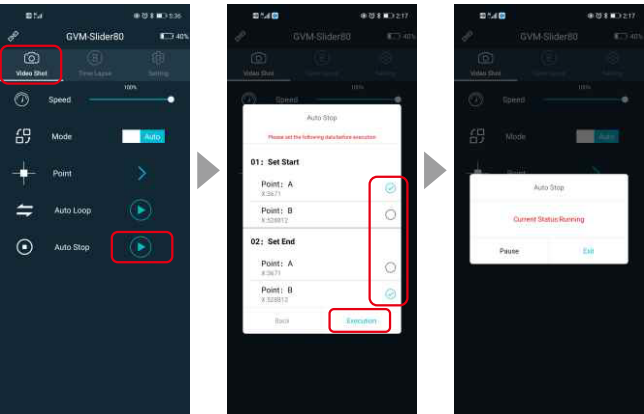
② Video shooting → Automatic mode → Set key point → Add key point B (Moving slider operation to any desired ending point) → Confirm to save



6. Automatic mode: Stop at point

After successfully setting two key points A and B according to "5. Set key points", the stop function can be executed.

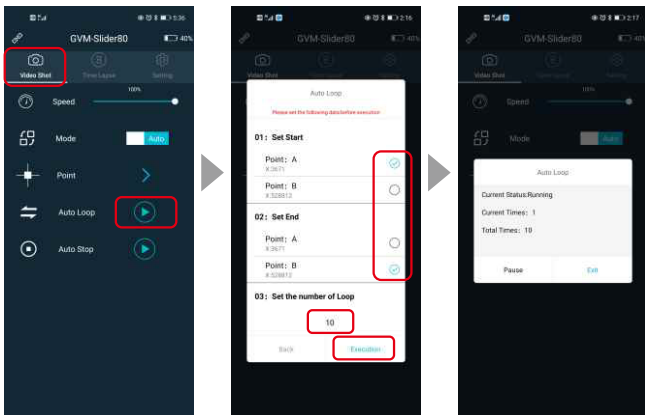
Video shooting → Stop at point → Click arrow icon on the right of "Stop at point" → Pop up the "Stop at point" dialog box → Select key points to set the starting and ending points → Click "Start execution" → Slider moves from current position to the setting "Starting point" position → Start to execute the stop action to the point, moving from "Starting point" to "Ending point" → When movement from "Starting point" to "Ending point", movement stops and completes.



7. Automatic mode: Automatic round-trip

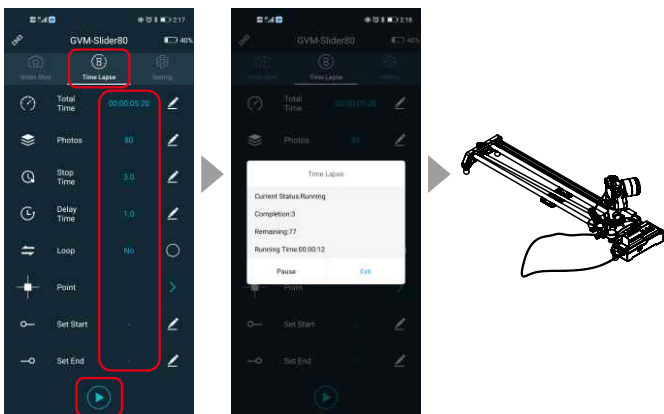
After successfully setting two key points A and B according to "5. Automatic mode: Set key points", the automatic round-trip function can be executed.

Video shooting → Automatic round-trip → Click arrow icon on the right of "Auto round-trip" → Pop up the "Auto round-trip" setting dialog box → Select key points to set starting point, ending point and input setting times → Click "Start execution" → Slider moves from current position to "starting point" position → Start to perform automatic reciprocating action, from "starting point" to "ending point" movement → When movement from "starting point" to "ending point", automatically return to "starting point" movement, until setting times are completed then stop exercising.



8. Time-lapse shooting :

After successfully setting two key points A and B according to "5. Set key points", the time-lapse shooting function can be executed.



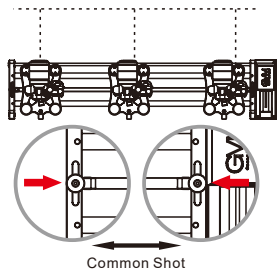
Time-lapse shooting → Set key points → Set starting point and ending point → Set other parameters → Whether to go back and forth → Choose yes and click start → Slider moves from current position to "starting point" position → Start to execute action, every time pause and take a picture, until all the setting number of pictures is taken.

After setting time-lapse shooting parameters and starting shooting, mobile phone connection can be taken away or disconnected, and no need mobile phone during time-lapse shooting. Slider will automatically complete the number of shooting and stop.

9. Slider has three Photography Shooting Methods. You can choose the following methods: Horizontal shooting / Follow focus shooting and 90° Panorama shooting.

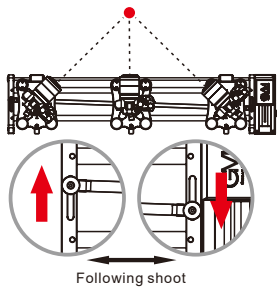
Horizontal shooting:

The camera Angle remains constant. Loose the adjusting rod's brake, adjusting rod on the both feet center, lock the brake.



Follow focus shooting:

The camera Angle follow focus on the target. Loose the adjusting rod' s brake, adjusting rod to the upper left corner and the lower right corner, lock the brake.



90° Panorama shooting:

The camera Angle can be 90° shooting. Loose the adjusting rod' s brake, adjusting rod to the upper right corner and the lower left corner, lock the brake.

